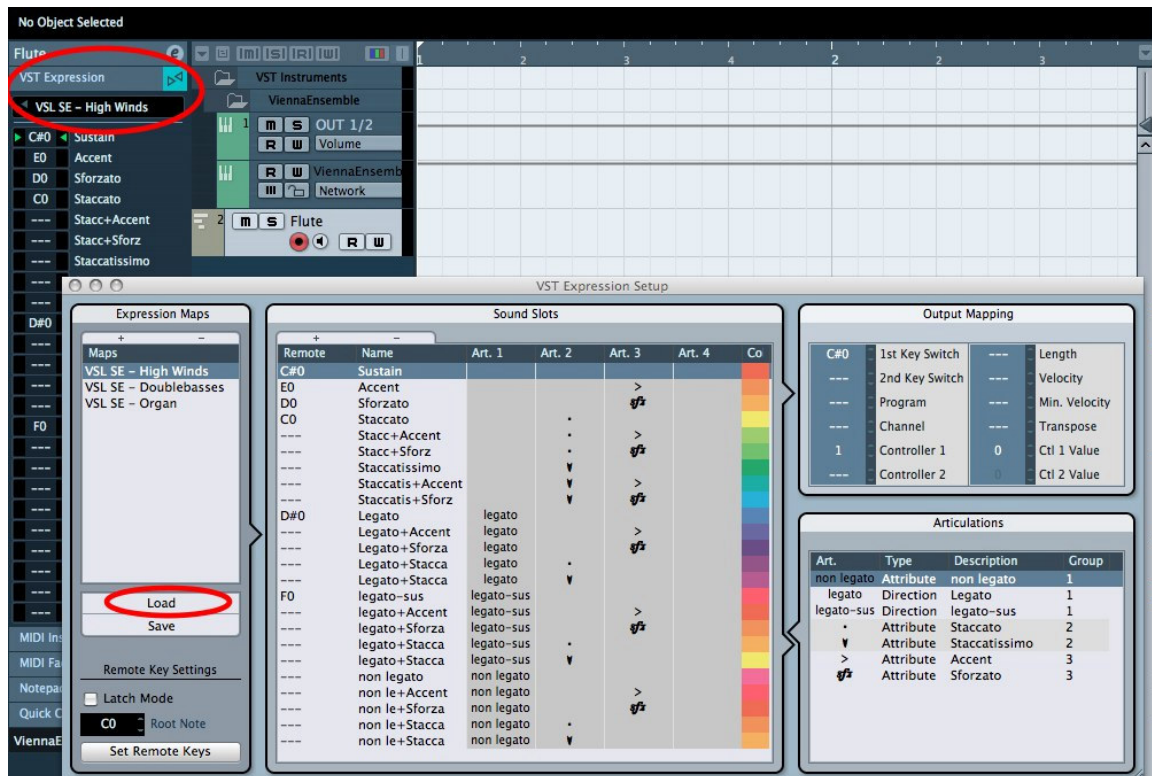


VST Expression Maps for the Vienna Symphonic Library Special Editions

Introduction

For using the contained VST Expression Maps, **Cubase 5.0.1 or higher** is required.

- You can add VST Expression Maps to existing projects by opening the VST Expression Map editor, then importing the desired map(s) - left column - and load a matching map into each instrument track or MIDI track (from the Cubase 5 track inspector).



- Integrate VST Expression Maps to existing track presets or create new track presets (instrument or MIDI tracks). This way, a sound can be loaded as a complete channel strip including the Expression Map and other settings. Track Presets can be conveniently managed in the Cubase 5 MediaBay.
- Include VST Expression Maps in project templates and update your existing project templates with VST Expression Maps. Unused maps can still be loaded in the VST Expression Map Editor for later use.

List of included Expression Maps

VSL SE - Violins, Violas, Celli. Works with the following matrices:

01S Solo violin
02S Solo viola
03S Solo cello
01S Solo violin mute
02S Solo viola mute
03S Solo cello mute
05S Solo violin + violin - 8va
06S Solo violin + viola - 8va
07S Solo viola + cello - 8va
08S Solo cello + bass - 8va
11S Chamber Violins
12S Chamber Violas
13S Chamber cellos
11S Chamber violins mute
12S Chamber violas mute
13S Chamber cellos mute
15S Chamber violins + violins - 8va
16S Chamber violins + violas - 8va
17S Chamber violas + cellos - 8va
18S Chamber cellos + basses - 8va
21S Strings violins
22S Strings violas
23S Strings cellos
25S Strings violins + violins - 8va
26S Strings violins + violas - 8va
27S Strings violas + cellos - 8va
28S Strings cellos + basses - 8va
51S App violins
52S App violas
53S App cellos
61S App violins mute
62S App violas mute
63S App cellos mute

VSL SE - Doublebasses. Works with the following matrices:

04S Solo bass
04S Solo bass mute
14S Chamber basses

14S Chamber basses mute
24S Strings basses
54S App basses
64S App basses mute

VSL SE - Appassionata Vi,Va,Vc. Works with the following matrices:

31S App-Strings violins
32S App-Strings violas
33S App-Strings cellos
35S App-Strings violins + violins - 8va
36S App-Strings violins + violas - 8va
37S App-Strings violas + cellos - 8va
38S App-Strings cellos + basses - 8va

VSL SE - Appassionata Basses. Works with the following matrix:

34S App-Strings basses

VSL SE - High Winds. Works with the following matrices:

01S Piccolo
02S Flute 1
03S Flute 2
04S Alto flute
05S Flute ensemble
06S Piccolo + flute 1 - 8va
07S Bass flute
11S Oboe French
12S Oboe Vienna
13S Oboe d'amore
14S English horn
15S Oboe ensemble
16S Oboe + english horn - 8va
17S English horn (Vn)
18S Heckelphone
21S Clarinet Eb
22S Clarinet Bb
23S Bass clarinet
24S Basset horn
25S Clarinet ensemble
26S Clarinet Bb + bass - 8va
31 Bassoon
33 Bassoon ensemble

35 Bassoon 2
41 Alto saxophone
42 Tenor saxophone
43 Bariton saxophone
44 Alto sax + tenor - 8va
45 Soprano saxophone
46 Bass saxophone
01S Horn Vienna
02S Horn triple
03S Horn ensemble - a4
04S Horn ensemble - a8
11S Piccolo trumpet
12S Trumpet C
13S Trumpet C mute
14S Trumpet ensemble
15S Trumpet ensemble mute
17S Bass trumpet
18S Cornet
19S Flugelhorn
20S Trumpet Bb
21S Tenor trombone
22S Tenor trombone mute
25S Trombone ensemble
26S Trombone ensemble mute
27S Tenor trombone + bass - 8va
28S Alt trombone
33S Wagner tuba
01S Sopran – AA
02S Alt – AA
03S Tenor – AA
04S Bass – AA
11S Full Choir – AA

VSL SE - Low Winds. Works with the following matrices:

27S Contrabass clarinet
32 Contra bassoon
34 Bassoon + contra - 8va
23S Bass trombone
24S Contrabass trombone
31S Tuba
32S Contrabass tuba
34S Euphonium
35S Cimbasso

VSL SE - Harp. Works with the following matrix:

41S Harp

VSL SE - Organ. Works with the following matrix:

03S Organ

5

VSL SE - Vibraphone. Works with the following matrix:

07S Vibraphone

VSL SE - Timpani. Works with the following matrix:

11S Timpani

VSL SE - Concert Guitar. Works with the following matrix:

21S Concert Guitar

VSL SE - E-Guitar. Works with the following matrix:

22S E-Guitar

Closing words

We hope that this introduction was helpful during your first steps with VST Expression and our Vienna Instruments presets and Expression Maps!

If you're not familiar with the Vienna Instruments and Vienna Ensemble, or just want to make sure, please have a look at the Vienna Instruments and Vienna Ensemble manuals and the video tutorials in your [User Area](#)! And if they don't provide the information you need, feel free to post your questions at <http://community.vsl.co.at/forums> or send an e-mail to support@vsl.co.at.

We wish you a good time with the Vienna Instruments and the VST Expression Maps!

Your Vienna Symphonic Library Team