

# Steinberg TOOLS for CMC Installation Guide

## Information

- This software and Installation Guide are the exclusive copyrights of Yamaha Corporation.
- Copying of the software or reproduction of this Installation Guide in whole or in part by any means is expressly forbidden without the written consent of the manufacturer.
- Steinberg/Yamaha makes no representations or warranties with regard to the use of the software and documentation and cannot be held responsible for the results of the use of this Installation Guide and the software.
- Future upgrades of application and system software and any changes in specifications and functions will be announced at the following website.  
<http://www.steinberg.net>
- Steinberg and Cubase are the registered trademarks of Steinberg Media Technologies GmbH.
- Windows is the registered trademark of Microsoft® Corporation.
- Apple, Mac and Macintosh are trademarks of Apple Inc., registered in the U.S. and other countries.
- The company names and product names in this manual are the trademarks or registered trademarks of their respective companies.
- Copying of the commercially available musical data including but not limited to MIDI data and/or audio data is strictly prohibited except for your personal use.

## What is TOOLS for CMC?

TOOLS for CMC is necessary when connecting the device to a computer, and consists of “Yamaha USB-MIDI Driver” and “Steinberg CMC Applications.”

“Yamaha USB-MIDI Driver” allows communication between the device and a computer.

“Steinberg CMC Applications” consists of “Steinberg CMC Extension,” “Steinberg CMC-PD Editor” and “Steinberg CMC-QC Editor.” “Steinberg CMC Extension” allows you to link the device with Cubase. “Steinberg CMC-PD Editor”/ “Steinberg CMC-QC Editor” allows you to edit various settings of CMC-PD/ CMC-QC on a connected computer.

# TOOLS for CMC Installation

## NOTE

- You are only permitted to use this software pursuant to the terms and conditions of the “License Agreement” shown during the installation.
- If the same software components have already been installed in your computer, you can use the same procedure as described in the Installation instructions here to update the software.

## Windows

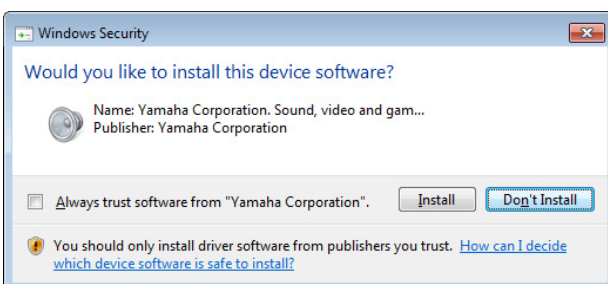
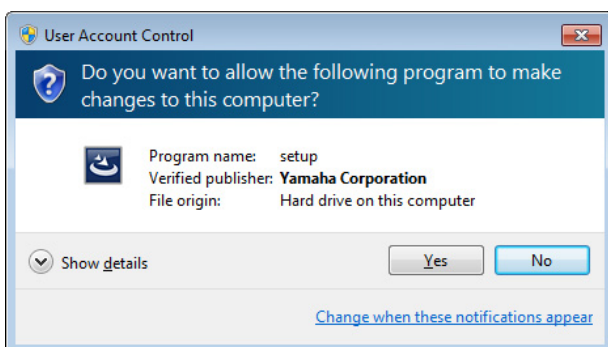
### Before installing

If the following warning messages appear during the installation, click [Continue Anyway], [Yes], or [Install].

Example warning messages on Windows XP



Example warning messages on Windows Vista / Windows 7 / Windows 8



### Installation

- 1 Disconnect all USB devices other than the mouse and keyboard from the computer.**
- 2 Start the computer and log on to the Administrator account.**  
Exit any open applications and close all open windows.
- 3 After the downloaded compressed file is properly extracted, double-click the file “setup.exe.”**
- 4 Follow the on-screen instructions to install the software.**  
Install the following software in the order below.
  - Yamaha USB-MIDI Driver
  - Steinberg CMC Applications
- 5 When installation has been completed, click [Finish].**  
If a window requiring you to restart your computer appears, follow the on-screen instructions and restart the computer.
- 6 Connect the device directly to the computer by using the included USB cable.**  
**Windows XP:**  
The “Found New Hardware Wizard” window appears. Go on to step 7.  
**Windows Vista / Windows 7 / Windows 8:**  
Installation of the TOOLS for CMC is now complete.
- 7 If the message “Can Windows connect to Windows Update to search for software?” appears in the middle of the window, select “No, not this time” then click [Next].**
- 8 Confirm that “Install the software automatically” has been selected then click [Next].**
- 9 When the installation has been completed, click [Finish].**

Installation of the TOOLS for CMC is now complete.

# Mac

---

## Installation

---

- 1 Disconnect all USB devices other than the mouse and keyboard from the computer.**
- 2 Start the computer and log in to the Administrator account.**  
Exit any open applications and close all open windows.
- 3 After the downloaded compressed file is properly extracted, double-click the file “TOOLS for CMC V\*\*\*.pkg.”**

\*\*\* represents the version number.

- 4 Follow the on-screen instructions to install the software.**
- 5 When installation has been completed, click [Close].**
- 6 Connect the device directly to the computer by using the included USB cable.**

Installation of the TOOLS for CMC is now complete.

## Uninstalling the TOOLS for CMC

You must remove the following two software components installed from the TOOLS for CMC.

- Yamaha USB-MIDI Driver
- Steinberg CMC Applications

Follow the steps below to uninstall the software.

## Windows

---

- 1 Disconnect all USB devices other than the mouse and keyboard from the computer.**
- 2 Start the computer and log on to the Administrator account.**  
Exit any open applications and close all open windows.
- 3 Open the window for the uninstall operation as follows.**

**Windows XP:**

[Control Panel] → [Add or Remove Programs]

**Windows Vista / Windows 7 / Windows 8:**

[Control Panel] → [Uninstall a Program]

- 4 Select one of the software components from the list.**
- 5 Uninstall them as follows.**

**Windows XP:**

Click [Change/Remove] or [Remove]. Follow the onscreen instructions to remove the software.

**Windows Vista / Windows 7 / Windows 8:**

Click [Uninstall] or [Uninstall/Change]. Follow the onscreen instructions to remove the software.

Uninstallation of the TOOLS for CMC is now complete.

# Mac

---

- 1 Disconnect all USB devices other than the mouse and keyboard from the computer.**
- 2 Start the computer and log in to the Administrator account.**

Exit any open applications and close all open windows.
- 3 After the downloaded compressed file is properly extracted, double-click the following software.**

**To remove Yamaha USB-MIDI Driver:**  
Uninstall Yamaha USB-MIDI Driver

**To remove Steinberg CMC Applications:**  
Uninstall Steinberg CMC Applications
- 4 Click [Run] when the “Welcome to the Yamaha USB-MIDI Driver uninstaller” or “Welcome to the Steinberg CMC Applications uninstaller” window appears.**

After that, follow the on-screen instructions to uninstall the software.
- 5 After completing the uninstallation, an “Uninstallation completed” window appears. Click [Close].**

Uninstallation of the TOOLS for CMC is now complete.