

CMC-QC Editor

The CMC-QC Editor is a convenient tool which lets you edit the MIDI control change parameter assigned to each knob. Thanks to its easy-to-understand graphical interface, you can edit/assign the CMC-QC's settings right from your computer.



NOTICE

Do not unplug the USB cable while operating the CMC-QC Editor. Doing so could result in damage to the data.

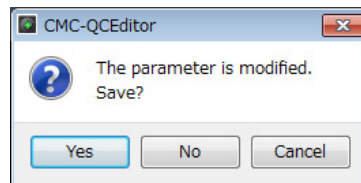
Controls and Functions



1 (Close button)

Closes the editor.

The following dialog will appear if you close the editor without saving the settings.



Click [Yes] to open the "Save as" window. Click [No] to close the editor without saving its changes. Click [Cancel] to cancel closing the editor.

2 (Minimize button)

Minimizes the editor window.

3 (Fixing button)

Switches whether or not to always display the editor window on top of any other windows.



Always displayed on top



Not always displayed on top

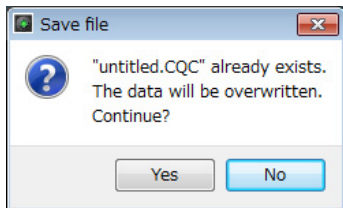
4 [File] (File menu)

Clicking this calls up the following menus.

Menu	Function
Open	Opens the file previously saved.
Save	When opening an existing file, this overwrites it with the current changes. When creating a new file, this functions as the same as "Save as."
Save as	Saves the current changes as a new file.

If you execute [Open] after changing the settings, a dialog appears to confirm saving of the changes. Click [Yes] to open the "Save as" window. Click [No] to open a new file without saving the changes. Click [Cancel] to cancel opening a file.

The following dialog appears, if the current settings are saved to an existing file.



Click [Yes] to overwrite the current settings onto the existing file.

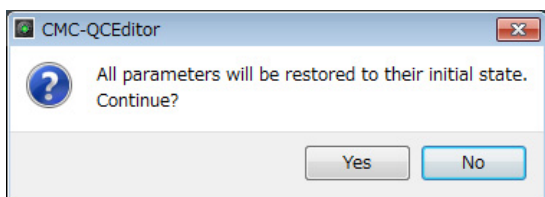
Click [No] to cancel this operation.

5 [Edit] (Edit menu)

Clicking this calls up the following menus.

Menu	Function
Copy	Copies the currently selected item's parameter value to the clipboard. The items which can be copied are 1 – 6 of Fig. 8 (page 3). Copying 1 lets you copy data 2 – 6 all together.
Paste	Pastes the parameter value copied in the selected item. You can paste data only to the same type.
Revert To Initial State	Restores the current settings to the state that existed when the editor was started.
Load Factory Preset	Restores the current settings to the factory settings.

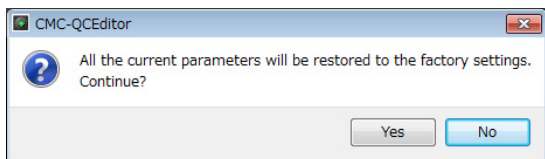
The following dialog appears as soon as [Revert To Initial State] is executed.



Click [Yes] to restore the current settings to the state that existed when the editor was started.

Click [No] to cancel this operation.

The following dialog appears as soon as [Load Factory Preset] is executed.



Click [Yes] to restore the current settings to the factory settings.

Click [No] to cancel this operation.

6 [Help] (Help menu)

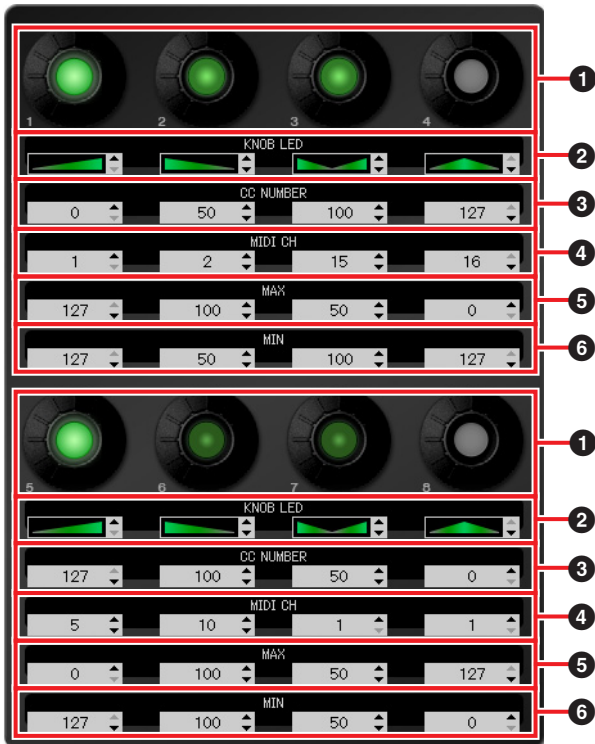
Clicking this calls up the following menus.

Menu	Function
Manual	Displays the operation manual of the CMC-QC Editor.
About	Displays information about the CMC-QC Editor.

7 Online icon

Displays the connection status between the editor and the device. Lights as soon as communication with the device is enabled. The device goes into MIDI mode automatically.

Fig. 8



1 Knob

This is for display purposes only. LED brightness varies according to the current setting value of the control change.

2 – 6 Edit Box

This allows you to confirm/edit the settings of the control change parameter assigned to the knob.

A parameter is always assigned to all knobs. Use any of the following to edit each parameter after clicking the edit box.

- Mouse wheel
- Computer keyboard cursor key
- Direct Input (except the editing of “Knob LED lighting type”)
- ▲/▼ click

For details about the parameters assigned to the edit box, see below.

2 [KNOB LED] (Knob LED)

Selects the LED lighting type for the knob. Four types are available.

The setting-based brightness varies depending on the type.

Type 1



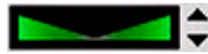
The smaller/ larger the setting value is, the darker/ brighter the LED brightness is.

Type 2



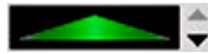
The smaller/ larger the setting value is, the brighter/ darker the LED brightness is.

Type 3



The closer to or further from the center the setting value is, the darker/brighter the LED brightness is.

Type 4



The closer to or further from the center the setting value is, the brighter/darker the LED brightness is.

3 [CC NUMBER] (Control Change Number)

Displays/ edits the currently assigned MIDI Control Change number. Range is from 0 to 127.

4 [MIDI CH] (MIDI channel number)

Displays/ edits the currently specified MIDI channel. Range is from 1 to 16.

5 6 [MAX]/[MIN] (Maximum/ Minimum)

Displays/edits the maximum/minimum values of Control Change assigned to 3. Range is from 0 to 127.

Specifying the maximum/minimum values to both sides 5 and 6 can be done. The knob behaviors are given below.

- When the value is 5 > 6: The output value decreases/ increases by turning the knob to the left/right.
- When the value is 5 < 6: The output value increases/ decreases by turning the knob to the left/right.
- If inputting the same value to 5 and 6, the output value stays constant.